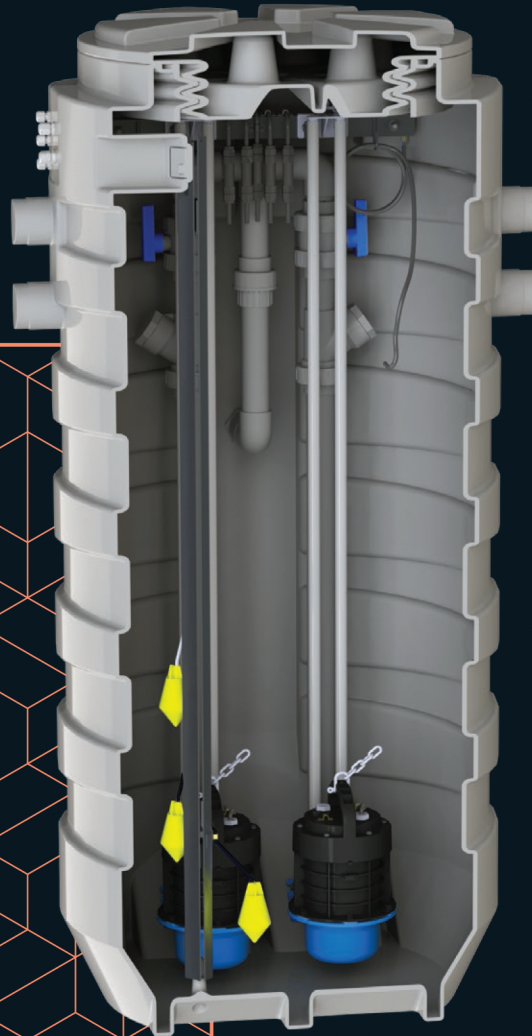




SANIFOS® 1300

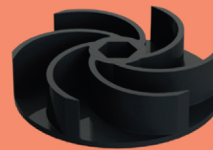
UNDERGROUND **PUMPING STATION**
2 PUMPS



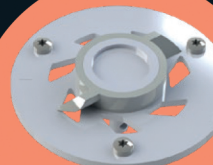
36



Smart control for
SANIFOS 1300



Vortex KX V6

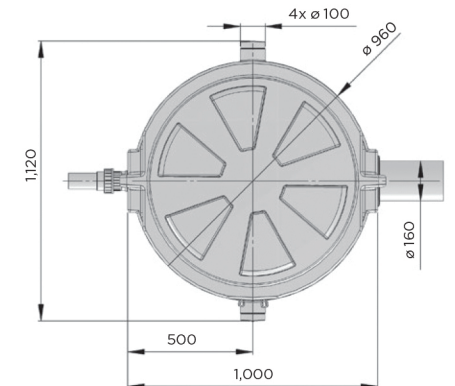
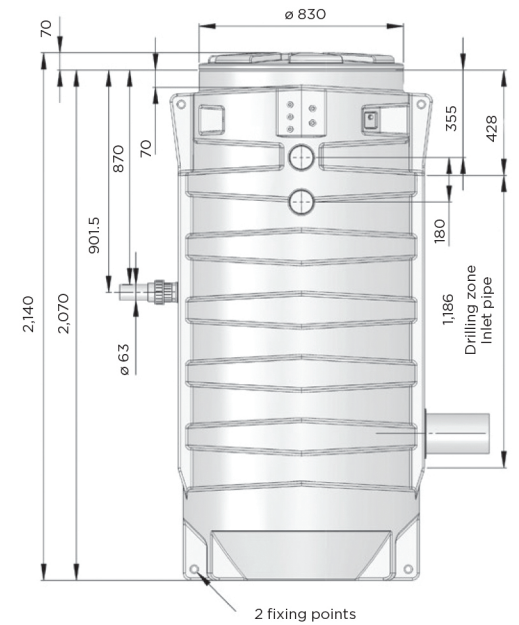


Grinder
ProX K2

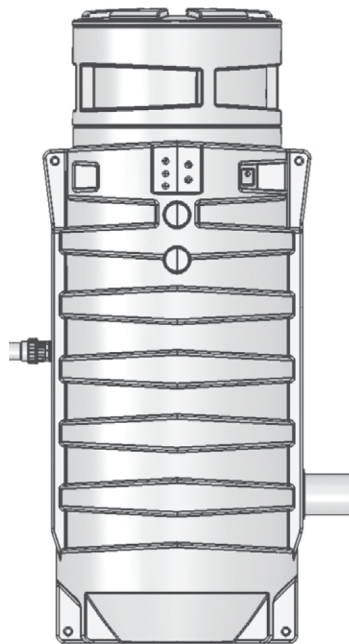
SEWAGE

WC, bathroom, kitchen and laundry

17 m
↑



SANIFOS 1300 with extension 40 cm,
Reference: EAN 3308815077826
RO250100



BENEFITS

- For all configurations: single or three phases, Grinder or Vortex
- 2 pumps on stainless guide
- Inlet vertical drilling zone with template
- Available extension: 40 cm

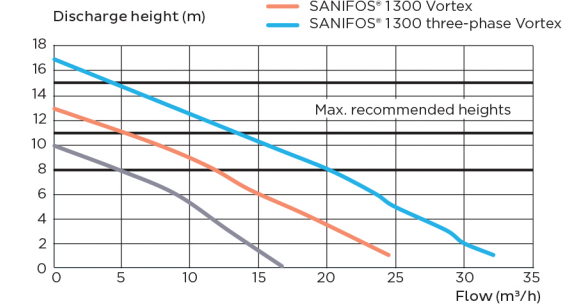
APPLICATIONS

- Pumping of sewage from multiple single-family houses or shops
- For installation outside buildings
- Fully compatible with an installation where the ground can become frozen
- Discharge depth: 870 mm (or 1,270 mm with extension)

FEATURES

- Materials: Polyethylene
- Max. temperature of incoming waste water 70°C intermittently (max. 5 min.)
- ON/OFF level 650/150 mm
- Incoming water flow line: 428 - 1,614 mm (with extension: 828 - 2,014 mm)
- Activation system float
- Alarm level: 930 mm
- 2 Check valve
- Outlet DN 160
- Discharge DN 63

PUMP GRAPH



REFERENCE	EAN	FACTORY CODE	SYSTEM	TANK (L)	U (V)	P (W)	FREQUENCY (HZ)	I MAX (A)	TR / MN	Q MAX (M³/H)	H MAX (M)	REMOTE CONTROL	POWER CLASS CONTROL	ALARM
SANIFOS 1300 2GR SP S	3 308 815 077 796	SANIFOS1300	Grinder	1,300	230	2x1,500	50/60	2x6	2,800	16	10	Smart	IP X4	External, wireless
SANIFOS 1300 2VX SP S	3 308 815 077 802	SANIFOS1300VORTEX	Vortex							25	13			
SANIFOS 1300 2VX SP T	3 308 815 077 819	SANIFOS1300VORTEXTRI	Vortex							32	17			